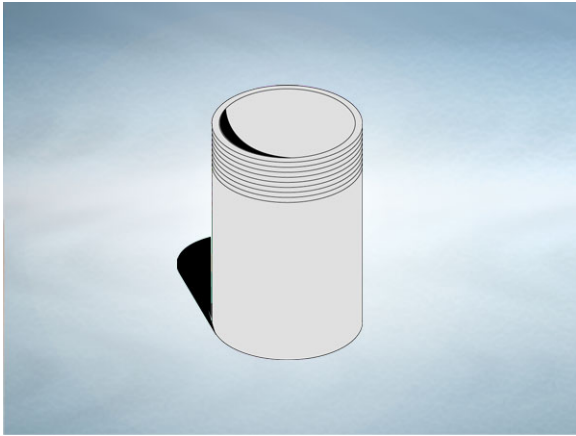


Product Details

T103 Adaptor

Technical Data



Dimensions:

111 dia. overall size

90 - Length

Connection - 4" BS416, 100mm DIN19522 / Harmer SML

Materials - Cast iron, lacquered

Weight - 1.1 kg

General Description:

Cast Iron T series Threaded Pipework Adaptor, with 4" BSP inlet and 111 dia. outlet. Spigot adaptor, enables gullies with BSP threaded outlet to be connected to pipework. Longer spigots can be made in 10mm increments up to 900mm. To specify/order add suffix "-" and length (mm).

Materials:

Cast Iron - BS EN 1561: Used for bodies, membrane clamping collars, spigot adaptors and accessories such as extensions. A widely used metal in the drainage industry, its resistance to corrosion permits extended use under extreme conditions. Castings are coated with a high grade lacquer paint to provide internal and external surface coverage. Paint will gradually wear off and is replaceable; oxidation (surface rusting) is a natural process which does not weaken the material. A zinc anti-corrosion coating is applied to certain castings by sherardizing.

All dimensions are in millimetres unless stated. In line with general practice all dimensions shown are nominal.

Wade International

Third Avenue, Halstead, Essex, CO9 2SX.

Telephone: +44 (0)1787 475151

Fax: +44 (0)1787 475579

e-mail: wadetech@alumascwms.co.uk

website: <https://www.alumascwms.co.uk/brands/wade/>

Dimensioned Section for T103:

